

FOOD BANKS

Food banks may serve specific geographic areas. Call ahead for eligibility requirements.

Adra P. Berry Food Bank 425-222-5573

31104 SE 86th St, Issaquah

Th: 1pm-3pm.

Visit in person. Call any day for information.

Fall City Food Pantry 425-269-8098

4326 337th Pl SE, Fall City

1st & 3rd W: 12pm-1:30pm, 6:30pm-7:30pm.

Visit in person. Proof of address required.

Hopelink

—Bellevue 425-943-7555

14812 Main St, Bellevue

M, Th: 1pm-4pm, 5pm-7pm;

T, W: 10am-3pm.

Serves Bellevue, Mercer Island, and Newcastle residents.

—Kirkland/Northshore 425-889-7880

11011 120th Ave NE, Kirkland

M: 1pm-4pm. T, Th: 1pm-4pm, 5pm-7pm.

W: 10am-3pm.

Operates a food pantry for Kirkland, Kenmore, Bothell, and Woodinville residents. Call for more information.

—Redmond 425-889-7880

8990 154th Ave NE, Redmond

M, W: 1pm-4pm, T: 10am-3pm,

W: 1pm-4pm, 5pm-7pm. Th: 10am-12pm.

Serves Redmond and Sammamish areas.

—Shoreline 206-440-7300

17837 Aurora Ave N, Shoreline

T: 10am-3pm, W: 1pm-4pm, 5pm-7pm.

Th: 1pm-4pm.

Serves residents of Shoreline & Lake Forest Park. Also serves area homeless individuals.

—Sno-Valley 425-889-7880

31957 E. Commercial St, Carnation

M: 4pm-6pm, W: 3pm-5pm, Th: 10am-12pm.

Visit in person. Call to register. Serves Snoqualmie Valley residents.

Issaquah Food Bank 425-392-4123

179 1st Ave SE, Issaquah

Open every other week, M-Th: 1pm-7pm.

Food pantry available to all.

Youth & Family Services 206-275-7657

2040 84th Ave SE, Mercer Island

M-F: 9am-5pm.

Provides emergency assistance for food.

Contact program coordinator for eligibility.

Renewal Food Bank 425-736-8132

15022 Bel-Red Rd, Bellevue

M: 12pm-3pm; Tu: 4pm-6:30pm; W: 10am-1pm.

Visit in person once per week.

Snoqualmie Valley Food Bank 425-888-7832

122 E 3rd St, North Bend

T: 3pm-6:15pm; W: 9:30am-4:15pm;

Th: 10am-12:45pm.

Offers pet food and sundries once per month.

Woodinville Storehouse 206-595-6419

17110 140th Ave NE, Woodinville

Tu: 6:30pm-7:20pm; Sa: 9am-10:20am.

Visit in person.

HOT MEALS

Crossroads Meal Program 425-452-7300

911 164th Ave NE, Bellevue

M-F: 6pm-7pm.

Provides hot meals for anyone in need. No ID required.

Issaquah Meals Program 425-679-0342

180 E Sunset Way, Issaquah

M-F: 5pm-6pm.

Visit in person; no ID required.

Issaquah Senior Center 425-837-3339

75 Northeast Creek Way

M-F: 12pm-12:30pm.

Provides a meal for adults 55+. Call for reservation. No ID required.

Open Kitchen 425-883-7553

16540 NE 80th St, Redmond

W: 5pm-7pm.

Provides a free hot meal for anyone in need. No ID required.

POPY's Café 206-569-7011

14514 20th Ave NE, Shoreline

W: 5pm-6:30pm.

Serves anyone in need; no ID required.

Sophia Place Day Center 425-896-7385

3032 Bellevue Way NE, Bellevue

Daily: 8am-3pm.

Serves women, with or without children. No ID required.

Vedic Cultural Center

Provides a free hot meal; no ID required.

—Vegetarian Meal 206-979-8002

1420 228th Ave SE, Sammamish

Daily: 7:30pm-9pm.

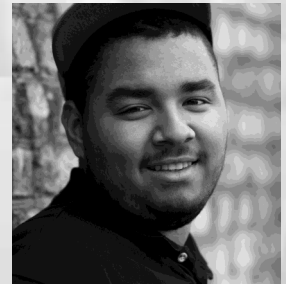
—Food Truck 425-499-6408

9451 Avondale Road NE, Redmond

Th: 6:30pm-8:30pm.

EAST & NORTH KING COUNTY

Emergency Services



4th Quarter 2024

Brochures updated quarterly
at www.crisisconnections.org



A SERVICE OF CRISIS CONNECTIONS

FOOD BENEFITS

King County 211 Basic Food Dial 211

M-F: 9am-5pm.

Offers screening and application appointments with a Basic Food Specialist. Call for more information.

Within Reach 888-436-6392

M-Th: 8am-5:30pm; F: 8am-5pm.

Offers a toll-free phone line with screening and application assistance for Basic Food and WIC nutrition programs.

DENTAL CARE

HealthPoint

—Bothell 425-424-6350

10414 Beardslee Blvd, Suite #201

M-F: 7:30am-5:30pm; Sa: 8:30am-12:30pm.

—Redmond 425-883-8000

16225 NE 87th Street Suite 150

Building A-Forest

M-F: 7:30am-4pm;

Every other Sa: 8am-12pm.

International Community Health

—Bellevue 425-373-3030

1050 140th Ave NE.

M-F: 8am-6pm; 4th Sa: 8am-6pm.

—Shoreline 206-533-2660

16549 Aurora Ave North

M-F: 8am-6pm; 3rd Sa: 8am-6pm.

LWTech Dental Clinic 425-739-8130

11605 132nd Ave NE, East Bldg, Rm E103,

Kirkland

Call for hours.

Mobile Dental Van Visit Website

www.medicalteams.org/mobiledental

Offers mobile dental care options for residents in King County who do not have dental insurance.

Public Health Dental Clinic 206-477-8000

14350 SE Eastgate Way, Bellevue

M-F: 8am-5pm.

Provides general dental care services for children ages 1-18, and low-income adults who are Medicaid Eligible.

Sea Mar Dental Clinic 425-998-5980

3801 150th Ave SE, Bellevue

M-Sa: 8am-5pm.

Offers dental care on a sliding scale. Call for appointment.

Shoreline Comm. College 206-546-4711

16101 Greenwood Avenue N, Shoreline

Schedule varies; please call.

Offers low-cost dental hygiene care for ages 4 and older. Not for emergencies.

MEDICAL CARE

EvergreenHealth

—Kirkland 425-899-6700

12333 NE 130th Ln, Suite 310

M-F: 8am-5pm; Sa: 8am-12pm.

—Redmond 425-899-2273

8980 161st Ave NE

M-Th: 7am-7pm; F: 7am-6pm;

Sa: 8am-4pm.

—Sammamish 425-898-0305

22850 NE 8th St, Suite 103

M: 7am-7pm; T, W, F: 7am-5pm; Th: 8am-5pm;

Sa: 8:30am-12:30pm.

—Woodinville 425-481-6363

16916 140th Ave NE, Suite 101

M-F: 8am-5pm; Sa: 9am-12pm.

HealthPoint

—Bothell 425-486-0658

10414 Beardslee Blvd, Suite 201

M-W: 8am-8pm; Th, F: 8am-5pm; Sa: 10am-3pm.

—Redmond 425-882-1697

16225 NE 87th St, Suite 150, Bldg. A-Forest

M, Tu: 8am-8pm; W-F: 8am-5pm.

Overlake Medical Clinics

—Bellevue 425-635-6350

400 108th Ave NE, Suite 100

M-F: 7am-6pm.

—Redmond 425-635-6430

16315 NE 74th St, Redmond Town Center

M-F: 7am-5pm.

Public Health - Eastgate 206-477-8000

14350 SE Eastgate Way, Bellevue

M, Tu, Th, F: 8am-5pm; W: Hours vary; call to verify.

Offers health services for low-income adults and children.

Sea Mar Comm. Health 425-460-7140

3801 150th Ave SE, Bellevue

M-Sa: 8am-5pm.

Offer primary care services for all ages.

Snoqualmie Ridge Clinic 425-831-2313

35020 SE Kinsey St, Snoqualmie

M-F: 8am-6pm.

Offer medical care including annual exams and chronic disease management.

Snoqualmie Valley Hospital 425-831-2333

9801 Frontier Ave SE, Snoqualmie

M-F: 8am-6pm.

Offers general and primary medical care.

Swedish Medical Center

—Snoqualmie 425-888-2016

37624 SE Fury St., Suite #101

M-F: 8am-6pm; Sa: 8am-12pm.

—Issaquah 425-394-0700

751 NE Blakely Dr. 5th Floor

M-F: 8am-5pm.

VA Outpatient Clinic 800-329-8387

13033 Bel-Red Rd, Suite #210, Bellevue

M-F: 8am-4:30pm. Call for appointment.

Serves Veterans enrolled in the VA Health Care System.

DROP-IN CENTERS

Porchlight 425-698-1295

13668 Southeast Eastgate Way, Bellevue

Daily, 5am-7pm.

Offers meals, case management, computer access, clothing, hygiene items, and mail service. Serves single men 18+.

God's Li'l Acre Day Center 206-497-0838

12521 33rd Avenue NE, Seattle

M-F: 9am-12pm, 1pm-4pm.

Offers a small neighborhood day center for those in need. Services include: laundry and shower facility, storage of belongings, and access to resources.

New Bethlehem Project 425-315-3873

8045 120th Avenue NE Suite #100, Kirkland

M-F: 10am-2pm.

Day center for homeless families that offers hygiene services, hot meals, and access to computers. Case management offered as well. Families with minor children only.

Sophia's Place 425-896-7385

3032 Bellevue Way NE, Bellevue

Daily: 8am-3pm.

Operates a daytime drop-in center for homeless single women and women with children. Offers meals, hygiene facilities, phone and computer access, temporary mail service, and other resources.