

DROP-IN CENTERS

Arcadia Drop-In Center 253-740-7189

932 Auburn Way S, Auburn
Hours: M-F: 1pm-6pm.
Offers youth and young adults aged 12-24 with drop-in services, counseling, and resources.
Provides access to basic needs including food, showers, and laundry service.

Catholic Comm. Services 253-893-7895

33505 13th Place S, Suite D, Federal Way
All Ages: M-F: 10am-3pm.
Families with children: Tu, Th: 4pm-7pm.
Provides showers, laundry, computers, mail service, phones, and other services.

Ray of Hope Resource Center 253-833-8925

2806 Auburn Way North, Auburn
M-Sa: 8:30am-8pm. Su: 2pm-8:30pm.
Serves families and individuals. Offers laundry and shower facility on select days, and offers breakfast, lunch, and dinner. Please call ahead.

HOT MEALS

Auburn Food Bank 253-833-8925

100 N Street SE, Auburn
Meals: M: 4:30pm-5pm.
Provides a free to-go dinner to anyone in need.

Calvary Chapel South 253-852-7030

1340 West Smith Street, Kent
Meal: 4th Sa of Month: 11am-1pm.
Changes to 3rd Sa of Month during the months of October, November, and December.
Provides a hot meal once a month to anyone in need. Also offers clothing and hygiene kits.

Hungry Soul Café 253-852-1044

3807 Reith Rd S, Kent
Meal: W: 4:30pm-5:30pm.
Serves a free nutritious dinner once per week to anyone in need.

Kent Community Supper 253-852-2057

336 2nd Ave S, Kent
Office: Tu-F: 10am-2pm. Meal: M: 5pm-6pm; Th: 4pm-5pm.
Serves a free hot dinner twice a week. Snack bags may be available during office hours.

Neighbor to Neighbor 253-852-3883

25213 116th Ave SE, Kent
Sa: 2pm-3pm.
Provides lunches and miscellaneous food items like canned vegetables or fresh produce.

Pacific/Algona Comm. Center 253-929-1150

100 3rd Ave SE, Pacific
Office: M-F: 8:30am-4:30pm.
General Public: M: 11am-12:30pm.
Seniors Nutrition Lunch: Tu-F: 12pm.
Offers a lunch for seniors, and a separate lunch for the general community.

Renton Community Supper 425-255-5974

720 S Tobin Street, Renton
Meal: M-Th: 4pm-5pm.
Provides a hot meal four days a week.
Available to anyone in need.

CLOTHING

Clothing Closet 253-520-3550

Kent Food Bank & Emergency Services
515 West Harrison Street Suite 107, Kent
W, F: 10am-12:15pm.
Operates a small clothing closet for residents of the Kent School District.

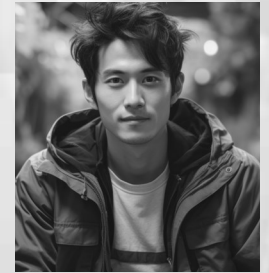
KentHOPE 253-480-2325

9009 Canyon Drive, Kent
M-F: 10am-2pm.
Operates a day center for homeless women and women with children. Provides clothing and hygiene items.

Call Ahead First!

SOUTH KING COUNTY

Emergency Services



4th Quarter 2024

Brochures updated quarterly at www.crisisconnections.org



A SERVICE OF CRISIS CONNECTIONS

FOOD BANKS

Food banks may serve specific geographic areas. Call ahead for eligibility requirements.

Auburn Food Bank 253-833-8925

2804 Auburn Way North, Auburn

M, Tu, Th, F: 9am-1pm.

2nd W: 4:30pm-5:30pm.

Serves Auburn School District residents.

Black Diamond Comm. Center 360-886-1011

31605 3rd Ave, Black Diamond

M-Th: 9am-4pm.

Serves residents of Black Diamond, Covington, Maple Valley, and Ravensdale.

Des Moines Food Bank 206-878-2660

22225 9th Ave S, Des Moines

M, W, F: 9am-11:45am; 3rd Tu: 6pm-8pm.

Serves anyone in need. Call ahead.

Enumclaw Kiwanis 253-239-7501

1350 Cole St, Enumclaw

M-W: 9am-11:45am.

Serves Enumclaw School District residents. May visit once per month.

Highline Area Food Bank 206-433-9900

18300 4th Ave S, Burien

Tu: 12pm-2:30pm; Th: 10am-12:30pm;

2nd Tu: 5:30pm-7pm.

Serves residents of the Highline area, encompassing parts of Burien, SeaTac, and Normandy Park. Clients may visit once per month for full service and weekly for partial service.

Kent Food Bank 253-520-3550

—Kent Alliance Center

515 W Harrison St, Ste. 107, Kent

General: W, F: 10am-1pm.

Seniors 55+: Th 10am-11am.

Serves Kent School District residents; clients may visit twice per month.

—Birch Creek Annex

12961 SE 275th St, Kent

M: 10am-1pm.

Provides food for Kent School District residents.

Maple Valley Food Bank 425-432-8633

21415 Renton-Maple Valley Rd, Maple Valley

Tu: 10:30am-6pm. W: 10:30am-1pm.

Serves residents of Maple Valley, Black Diamond, or those within the Tahoma School District.

Limited home delivery.

Margie Williams Helping Hands 425-255-1446

4519 NE 10th St, Renton

Sa: 8am-10:30am.

Provides a food pantry for anyone in need.

Visit in person, and it is best to bring own bags or boxes if possible.

Muckleshoot Family Resource 253-876-3336

39015 172nd Ave SE, Auburn

M-F: 9am-4pm.

Operates a food pantry for Muckleshoot Tribal members only. Offers Home Delivery for Elders and disabled adults.

Multi-Service Center 253-838-6810

1200 S 336th St, Federal Way

M, W, F: 10am-2pm; closed on holidays.

Provides food to anyone who resides within Washington State.

Plateau Outreach Ministries 360-825-8961x3

1720 1/2 Wells St, Enumclaw

Pantry: M: 12pm-3pm; Tu, W: 9am-12pm.

Emergency Food: M-Sa: 10am-3pm.

Provides weekly food to anyone in need.

Salvation Army - Renton 425-255-5969

206 S Tobin St, Renton

M, Tu, Th, F: 9am-11:15am, 1pm-3:15pm.

Serves residents of ZIP Codes 98040, 98055, 98056 (Renton), 98057, 98058, 98059 (Renton), and 98178 (outside Seattle city limits ONLY).

Tukwila Pantry 206-431-8293

3118 S 140th St, Riverton Park UMC, Tukwila

Tu, Th, Sa: 10am-2pm.

Operates a food pantry for residents of Tukwila, SeaTac, Burien, and Boulevard Park.

MEDICAL CARE

HealthPoint

Low cost medical & pharmacy services.

—Auburn 253-735-0166

126 Auburn Ave, Suite 300, Auburn

M-W: 8am-8pm; Th F: 8am-5pm;

Sa: 10am-3pm.

—Federal Way 253-874-7634

33431 13th Pl S, Federal Way

M, W, Th, F: 8am-5pm; Tu: 8am-7pm.

—Kent 253-852-2866

403 E Meeker St, Suite 200, Kent

M-W: 8am-8pm; Th, F: 8am-5pm.

—Midway 206-870-3590

26401 Pacific Hwy S Suite 101, Des Moines

M-W: 8am-8pm; Th, F: 8am-5pm.

Sa: 10am-3pm

—Renton 425-226-5536

200 S 2nd St, Renton

M, Tu: 8am-7pm; W-F: 8am-5pm.

—SeaTac 206-277-7200

4040 S 188th St, Suite 201, SeaTac

M, Tu: 8am-7pm; W-F: 8am-5pm.

—Tukwila 206-439-3289

Highline Clinic, 13030 Military Rd S, Tukwila

M-W: 8am-8pm; Th, F: 8am-5pm;

Sa: 10am-3pm.

Sea Mar Comm. Health 206-812-6140

14434 Ambaum Blvd SW, Suite 5, Burien

M-Sa: 8am-5pm.

Offers primary care family medicine services.

DENTAL CARE

Christ Comm. Free Clinic 253-736-2634

925 East Main St, Auburn

One M or F a month: 8am-5pm.

Urgent dental care; serves those without dental insurance. Appointment required.

HealthPoint

Emergency walk-in appointments as schedule permits.

—Auburn 253-735-0166

126 Auburn Ave, Suite #300, Auburn

M-F: 7:15am-5:30pm. Sa: 8:15am-12:30pm.

—Federal Way 253-874-7646

33431 13th Pl S, Federal Way

M-F: 7:45am-4pm.

Emergency Walk-In: Th: 7:30am-12pm.

—Kent 253-796-4071

403 E Meeker St, Suite 200, Kent

M-F: 7:30am-5:30pm; Sa: 8am-12pm.

Emergency Walk-In: M: 7:15am-12pm.

—Midway 206-870-3600

26401 Pacific Highway S, Suite 101

M-F: 7:30am-5:30pm; Sa: 8:30am-12:30pm.

Sea Mar Community Health

Provides both primary and emergency dental care.

—Burien 206-631-7316

18010 8th Ave S, Suite 416, Burien

M-F: 8am-5pm.

—Des Moines 206-212-4520

2781 S 242nd St, Des Moines

M-F: 8am-5pm.

—Federal Way 253-681-6620

31405 18th Ave S, Federal Way

M-F: 8am-5pm.