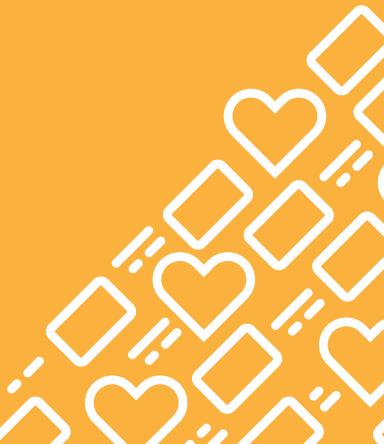


211

king  
county

A PROGRAM OF CRISIS CONNECTIONS

You  
are  
valued



# Community Living Connections is here to help

Information on state  
and federal programs

Emergency respite care

Unpaid family caregiver  
support

Transportation

Minor home repair

Nutrition programs

+ More

## Reach out for support

For yourself

A loved one

A client

 **CALL**

**844-348-5464**

Monday - Friday | 9am - 5pm

**211kingcounty.org**

info@communitylivingconnections.org

 **king  
county**  
A PROGRAM OF CRISIS CONNECTIONS